

Laser Road Imaging System

PAVEMETRICS's laser road imaging system (LRIS)

is composed of two high resolution linescan cameras and lasers that are configured to image 4m transverse road sections with 1 mm resolution at speeds that can reach 100 km/h. This patented imaging system was designed to increase the contrast and visibility of both small longitudinal and lateral road cracks.

The LRIS optical configuration increases the visibility of even the smallest cracks by using the incident illumination angle of the laser to cause the cracks to project shadows.

Using high power laser line projectors and advanced optics, the LRIS system is very robust to variations in outside lighting conditions and shadows cast by roadside objects, viaducts and the inspection vehicle itself.



KEY FEATURES

- 1 mm imaging at 100 km/h
- Day or night operation
- Crack image contrast enhancement
- Low power consumption
- Compact system
- Water resistant (IP65) housing



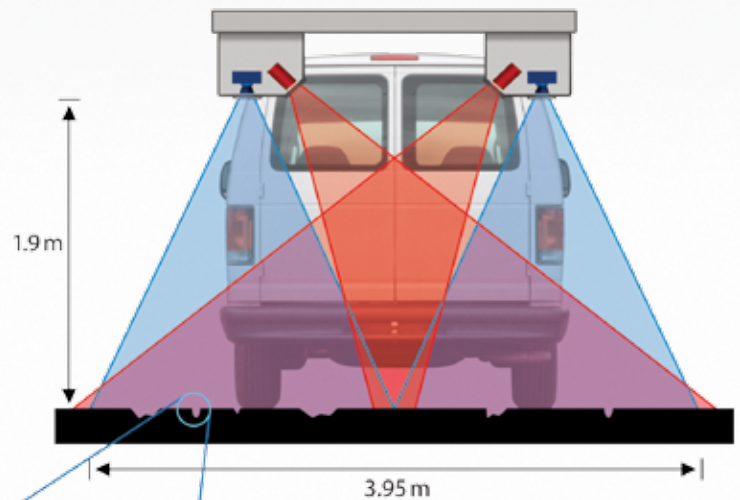
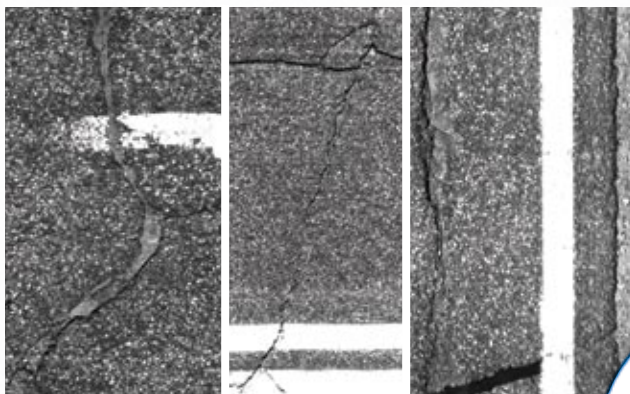
Laser Road Imaging System

SPECIFICATIONS

Image size:	4096 pixels/line
Line rate:	28000 lines/s
Image width:	4 m (3950 mm nominal)
Laser class:	3B
Power:	250W at 120/240 VAC
Sensor size (approx.):	300 mm(H) x 375 mm(L) x 200 mm(D)
Sensor weight (approx.):	20 kg

SYSTEM CONFIGURATION

Incident angle of the illumination system allows increased visibility of small cracks by projecting shadows.



All specifications subject to change without notice

