

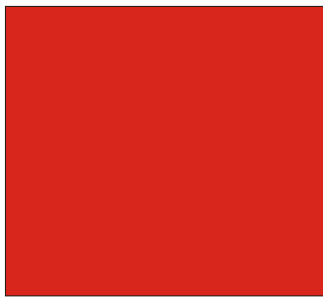


SEBA-HYDROMETRIE GmbH
Gewerbestr. 61a
87600 Kaufbeuren
Tel.: +49 (0)8341/9648- 0
Fax: +49 (0)8341/9648-48
E-Mail: info@seba.de
Internet: www.seba.de



Cable way installations

QZV We are certified
ISO 9001
certificate no. 01110505
Quality Is Our Standard



SEBA cable way installation with
electrical double drum winch SDW-E



portable SEBA cable way
installation SKA-T

- **robust**
- **reliable**
(TÜV released)
- **simple mounting**
- **different types**
for every field of application
- **unit-composed system**

Discharge

SEBA cable way installation SKA

The **SEBA cable way installation SKA** is provided for determination of current velocities in water courses, canals and rivers. Depending on the kind of waters and the maximum possible current velocity a suspended current meter equipment with sinkers of 25, 50 and 100 kg can be used.

For the different fields of application and the different local facts, several types of cable way installations are available:

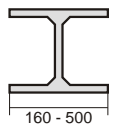
- **Type SKA-T** complete portable cable way installation for quick mounting at site. (pic. 7)
- **Type SKA-S-T** stationary cable way installation with portable double drum winch and crane trolley. (pic. 8)
- **Type SKA-S** stationary cable way installation with tension of track- and tow-cable by turn-buckles. (pic. 9)
- **Type SKA-G** stationary cable way installation with tension of track- and tow-cable by weights. (pic. 10)
- **Type SKA-H** stationary cable way installation with hydraulic tension of track-cable and tension of tow-cable by turn-buckles. (pic. 11)

By means of the double drum winch, the meterbody can be moved horizontally and vertically. The corresponding position of the meterbody can be determined with help of the two counters. So a determination of current velocities from river banks is possible.

Due to the solid execution of the stationary cable way installation a safe operation is possible in extreme conditions (flood, extensive span etc).

Main components of a cable way installation

- **Double drum winch SDW:** built with modern non-corrosive parts as a unit-composed system. Following **types** are available:
 - **SDW-T** portable mechanical double drum winch (manual operation)
 - **SDW-TE** portable mechanical double drum winch, electrical driven
 - **SDW-M** mechanical double drum winch (manual operation)
 - **SDW-ES** electrical double drum winch with infinitely variable motor
- **Roller block:** for operation of the tow cable with 2 ½-fold cable tension; by this means sliding of cable can be prevented.
- **Tow cable pulley:** for mounting at opposite post.
- **Track cable fixing:** for winch and opposite post.
- **Crane trolley:** solid construction with gummed rolls, with ball bearings.
- **Track cable:** Ø 20 - 24 mm, zincd steel cable acc. to DIN 3060 (not necessary for type SKA-T).
- **Tow cable:** Ø 6 mm, zincd steel cable acc. to DIN 3060.
- **Track- and tow cable tension:** with turn-buckles, weights or hydraulic.
- **Suspension cable:** Ø 3,25 mm, zincd steel cable with insulated copper cord (rolled on double winch).
- **Cable posts:** acc. to span and execution of the cable way installation IPB 160 - 500.

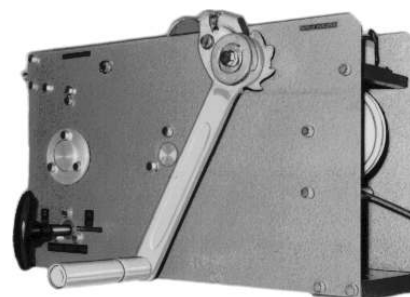


Portable, mechanical SEBA double drum winch type SDW-T

Due to the light material and the small dimensions, fixing and dismantling at site is possible without problems. Changing from horizontal to vertical operation (lifting and lowering) by manual operation of clutch.

Technical data:

Dimensions:	470 x 130 x 275 mm (l x w x h) without crank
Weight:	20 kg
Manual operation with safety crank	
Distance- and depth-counter (4-digits)	
Capacity of drum:	max. 60 m suspension cable (other lengths as special version on request)
Operation side:	right
Max. load:	50 kg



pic. 1:

portable double drum winch type SDW-T

Portable SEBA double drum winch electrical driven type SDW-TE

Same execution as type SDW-T but with adapted motor. Operation with generator is possible.

Technical data:

Electric motor: 0,315kW, 24VDC
Velocity: 0...31cm/s load addicted
Load: 25...100 kg



pic. 2:

Mechanical SEBA double drum winch type SDW-M

Changing from horizontal to vertical operation (lifting and lowering) by manual operation of clutch.

Technical data:

Manual operation with safety crank
Distance counter with 4- or 5-digits
Depth counter with 4-digits
Operation side: on request right or left
Mounting: horizontal or vertical
Reconstructable to electrical driven SEBA double drum winch type SDW-ES



pic. 3:

Electrical SEBA double drum winch type SDW-ES

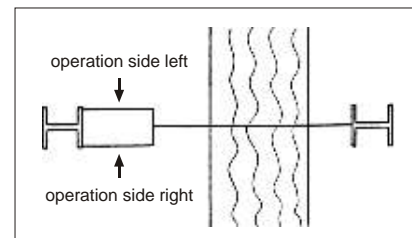
Same execution as type SDW-M, but with adapted motor. In case current is not available, manual operation by safety crank is possible. On request equipped with electrical switch of clutch.

electric double drum winch type SDW-ES

Technical data:

Type SDW-ES

Electric motor 1,5 kW, 220 V AC, infinitely variable velocity from 0 to approx. 50 cm/s. Operation with generator possible.



pic. 4:

Operation side of SEBA cable way installations type SKA-S, SKA-G and SKA-H on request left or right.

Operation terminal for SDW-ES

for fixing directly at winch or portable incl. 7m connection cable to winch

Version:

- standard
- incl. LC-Display,
- incl. LC-Display and integrated counter (pic. 5:)



pic. 5:

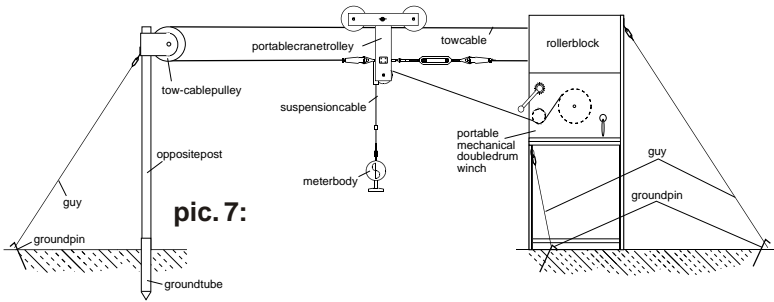
SEBA- drift indicator

For determination of the drift angle of a suspended current meter equipment. The complete instrument, consisting of monocular, plate with division marks, screw for adjustment and angle scale will be fixed at winch, resp. winch post.



pic. 6:

SEBA portable cable way installation, type SKA-T



pic. 7:

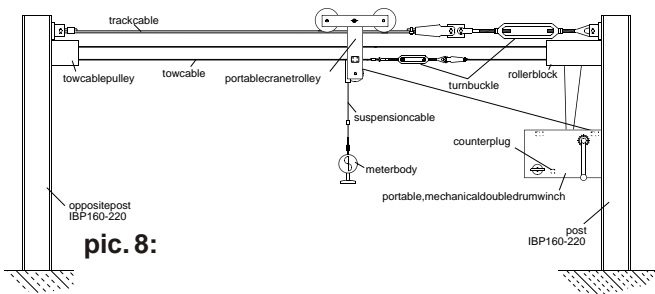
Complete, portable

SEBA cable way installation with double drum winch type SDW-T.

Max. span: 50 m

Max. load: 25 kg

SEBA cable way installation type SKA-S-T



pic. 8:

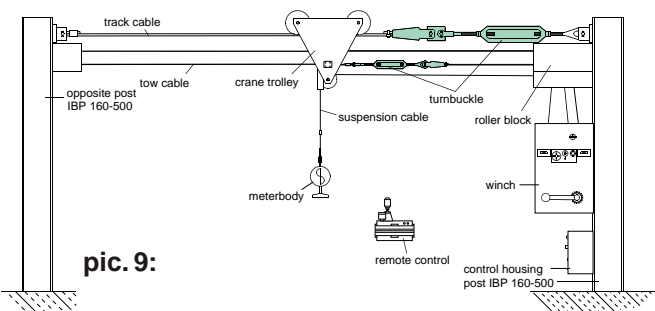
Stationary cable way installation

with portable double drum winch type SDW-T or SDW-TE and with detachable crane trolley.

Max. span: 50 m

Max. load: 50 kg

SEBA cable way installation type SKA-S



pic. 9:

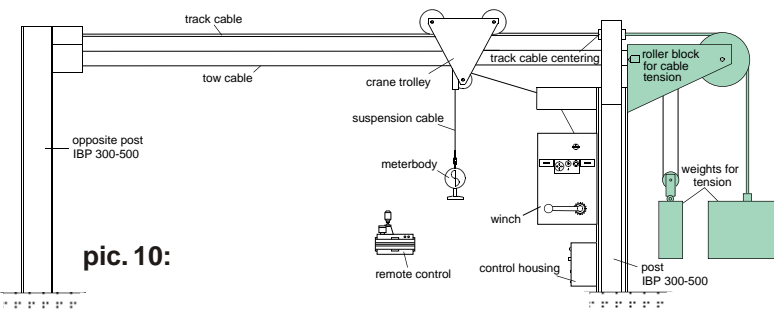
Stationary cable way installation

with turn-buckles and double drum winch type SDW-M or SDW-ES.

Max. span: 250 m

Max. load: 150 kg

SEBA cable way installation type SKA-G



pic. 10:

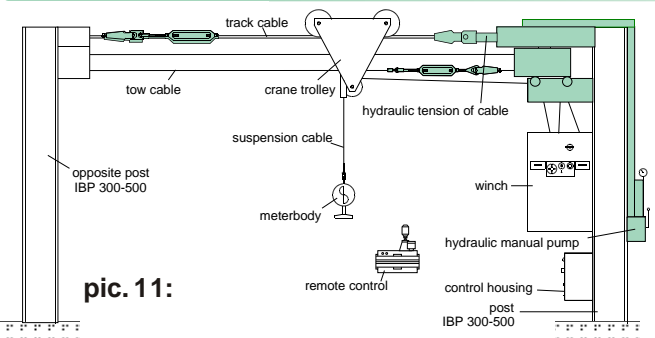
Stationary cable way installation

Tension with weights and double drum winch type SDW-M or SDW-ES.

Max. span: 250 m

Max. load: 150 kg

SEBA cable way installation type SKA-H



pic. 11:

Stationary cable way installation

with hydraulic tension and double drum winch type SDW-M or SDW-ES.

Max. span: 250 m

Max. load: 150 kg